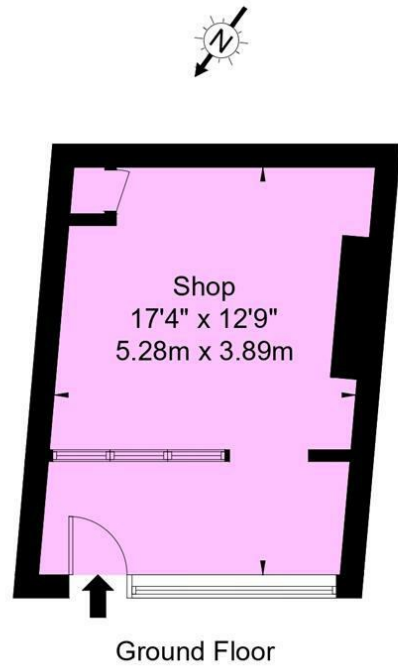


**Station Terrace, NW10 5RT**  
 Approx Gross Internal Area = 20.4 sq m / 219 sq ft



Ref : Copyright **BLEU PLAN**  
 The Floor plan is not to scale and measurements and areas shown are approximate and therefore should be used for illustrative purposes only. The plan has been prepared in accordance with the RICS code of Measuring Practice and whilst we have confidence in the information produced it must not be relied on. If there is any aspect of particular importance, you should carry out or commission your own inspection of the property.  
 Copyright @ BLEUPLAN



Energy Efficiency Rating		
	Current	Potential
<i>Very energy efficient - lower running costs</i>		
(92 plus) <b>A</b>		
(81-91) <b>B</b>		
(69-80) <b>C</b>		
(55-68) <b>D</b>	<b>59</b>	
(39-54) <b>E</b>		
(21-38) <b>F</b>		
(1-20) <b>G</b>		
<i>Not energy efficient - higher running costs</i>		
<b>England &amp; Wales</b>	EU Directive 2002/91/EC	

Environmental Impact (CO <sub>2</sub> ) Rating		
	Current	Potential
<i>Very environmentally friendly - lower CO2 emissions</i>		
(92 plus) <b>A</b>		
(81-91) <b>B</b>		
(69-80) <b>C</b>		
(55-68) <b>D</b>		
(39-54) <b>E</b>		
(21-38) <b>F</b>		
(1-20) <b>G</b>		
<i>Not environmentally friendly - higher CO2 emissions</i>		
<b>England &amp; Wales</b>	EU Directive 2002/91/EC	

**Station Terrace, London, NW10 5RT**

**Asking Price £520,000**

Subject to Contract

- Lock up shop of 219 sq ft
- The two parts can be combined or separated
- Freehold of building
- One bedroom apartment of 513 sq ft
- South facing rear garden



Tel: +44 (0)2 8960 9988  
 Fax: +44 (0)2 8960 9989

Email: mail@warwickstateagency.co.uk  
 warwickstateagents.tv | warwickstateagents.co.uk

69 Chamberlayne Road, London NW10 3ND  
 Tel: +44 (0)20 8960 9988 Fax: +44 (0)20 8960 9989



## Station Terrace, NW10 5RT

Nestled in the sought after area of Kensal Rise, a rare freehold opportunity to acquire the entire ground floor of this period style building, currently comprising a one bedroom garden apartment with the added benefit of a small lock up workshop / showroom, with attractive street frontage and dedicated entrance.

The property is configured in two parts. A 513sqft one bedroom apartment with double bedroom, a full width lounge with French doors leading out to a private south facing rear garden, separate kitchen, shower and W.C. The second part is a bright, glass fronted 219sq ft lock up shop which in addition to the street entrance, has an internal lockable door with direct access to the hallway of the flat.

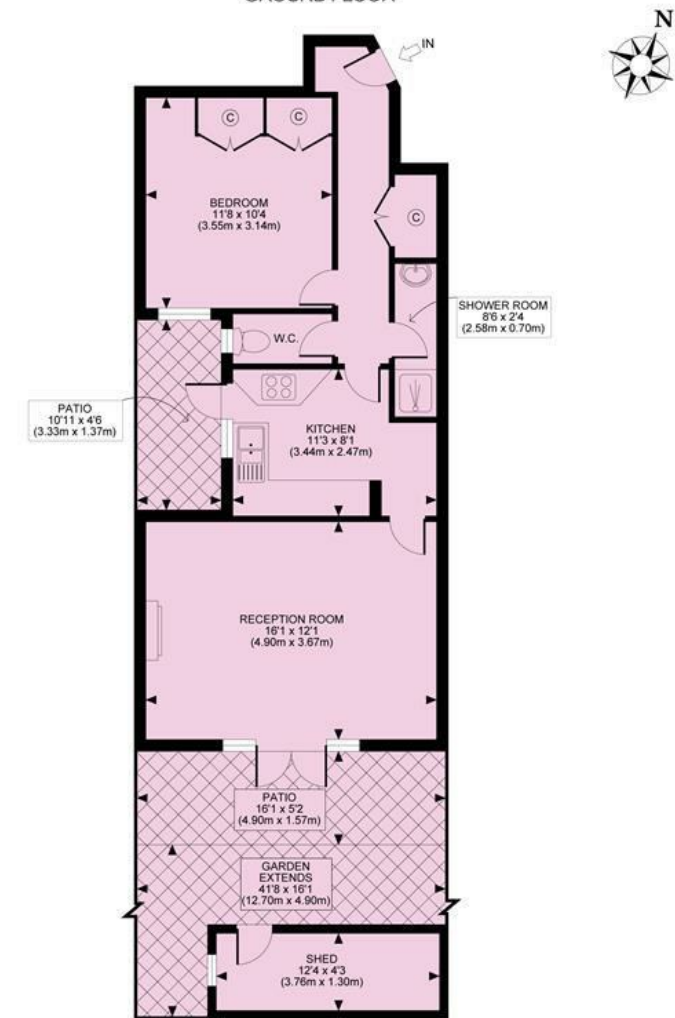
The workshop offers a versatile space ready for imaginative reconfiguration, be it conversion into a second bedroom as part of a renovation project, creating a rental unit for additional income or combining it into a live / workspace environment.

The freehold covers the entire building including the first-floor apartment.

Situated on Station Terrace, in the heart of this buzzing, trendy metropolis, opposite Kensal Rise train station, the location offers piazza shrubbery and seating areas, extended granite boutique style walkways with numerous cafés, restaurants and shops at your fingertips.



STATION TERRACE, NW1  
TOTAL APPROX. FLOOR PLAN AREA 513 SQ.FT. (47.6 SQ.M.)  
GROUND FLOOR



All measurements walls, doors, windows, fittings and their appliances, their size and locations are shown conventionally and are approximate only and cannot be regarded as being a representation either by the seller or his agent nor zentuvo  
www.zentuvo.co.uk

**Tenure** Freehold

**Price** Asking Price £520,000 Subject to Contract

Viewing by appointment , through joint sole agents Warwick Estate Agents



Tel: +44 (0)2 8960 9988  
Fax: +44 (0)2 8960 9989

Email: mail@warwickestateagency.co.uk  
warwickestateagents.tv | warwickestateagents.co.uk

69 Chamberlayne Road, London NW10 3ND  
Tel: +44 (0)20 8960 9988 Fax: +44 (0)20 8960 9989